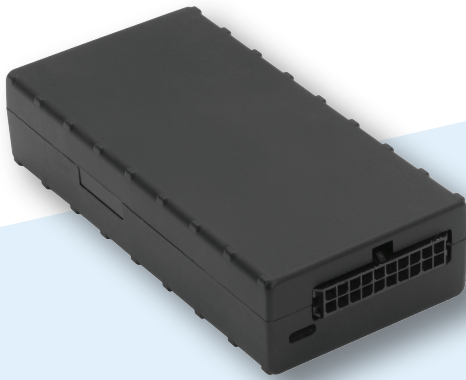


LMU-2630MB

LTE CAT-M1

Cal/Amp®

Leading Edge Fleet Tracker for Advanced Fleet Management with Extensive Capabilities



Dimensions

3.7" x 2.0" x 0.8"

94 mm x 53 mm x 20 mm

Weight

2.8 oz. (80 g) (w/ 1000 mAh Battery)

Cloud Native Platform

CalAmp Telematics Cloud allows you to connect remote assets to a diverse set of vertical applications and third-party services to scale your fleet and power data-driven operations.

Powerful Applications

CalAmp's enterprise-grade applications allow you to visualize the data you need and extract maximum value while minimizing your costs. Put intelligent analytics and custom reporting at your fingertips via a single-view, user-friendly interface.

Vehicle Tracking Technology

Flexible • Precise • Affordable



Flexible Installation

Wired, OBDII, and cigarette lighter power harness options for ready-to-use device setup



Driver Monitoring

Run time and performance diagnostics including speeding, accident detection, extreme braking and cornering, etc.



Battery Assurance

Mitigate interference or power loss with internal backup included battery



Gateway and Tag Ecosystem

Integrate with purpose-built tags and sensors for monitoring location of cargo in transit



Remote Safety Lockout

Easily disable vehicles or equipment, and remotely enable theft detection and stolen vehicle recovery



Comprehensive Inputs/Outputs

Digital and Analog I/O options, triple-axis accelerometer; vehicle diagnostics available via accessory

LMU-2630MB LTE CAT-M1 | Rugged. Precise. Affordable.

Cellular/Network	
Global Variant	
LTE CAT-M1	2100 (B1)/1900 (B2)/1800 (B3)AWS 1700 (B4)/850 (B5/B26)/900 (B8)/700 (B12/B13/B28)/800 (B18/B19/B20)/1900 (B39/B25) MHz
GSM/GPRS	850/900/1800/1900 MHz

Data Support
SMS, UDP Packet Data, TCP

Satellite Location (GNSS)	
Constellation Support	Hybrid GPS, GLONASS, SBAS Engine (WAAS, EGNOS, MSAS)
Channels	55 Channel
Tracking Sensitivity	-163 dBm
Acquisition Sensitivity	-155 dBm (hot start) -148 dBm (cold start)
Location Accuracy	~2.0m CEP Open Sky (SBAS 24 hours static)
Location Update Rate	Up to 4 Hz
AGPS Location Assistance Capable	Yes

Comprehensive I/O	
Ignition Inputs	1 fixed bias
Digital Inputs	4 (high/low bias selectable 0-32 VDC)
Digital Outputs	3 (open collector relay 150mA)
Analog Inputs	1 (external ADC input 0-32 VDC)
Accelerometer	Built in, triple-axis (driver behavior, impact detection, motion sensing, tilt detection)
Serial Interfacet	2 TTL ports
DC Power Output	1 (switched 3.3V)
1-Wire® Interface	1 (driver ID/temperature sense)
Status LEDs	2 (GPS and Cellular)

Interface Standards	
Bluetooth	BLE 5.0 Capable

Wireless Interfaces	
BLE Antenna	Internal
Cellular Antenna	Internal
GPS Antenna	Internal

For full tech specs visit calamp.com

¹ Subscription service required. Contact sales rep for additional details.

Cal/Amp®

© 2023 CalAmp. All specifications are typical and subject to change without notice.
All other trademarks are the property of their respective owners.
Rev. 01-05082023

Electrical	
Operating Voltage	12/24 VDC Vehicle Systems 9-30 VDC (start-up, operating) 7-32 VDC (momentary)
Power Consumption*	Typical <400uA @ 12V (low power sleep) Typical <4mA @ 12V (sleep) Typical 25mA @ 12V (radio-active sleep) Typical 50mA @ 12V (GPS tracking and cell idle)

Battery Pack	
Battery Capacity	Up to 1000 mAh (optional)
Battery Technology	Lithium-Ion
Charging Temperature	0° to +45° C

Environmental	
Temperature	-30° to +60° C (connected to primary power) -10° to +60° C (operating on internal battery) -20° to +25° C ≤ 6 months (long term storage with battery)
Humidity	85% RH @ 50° C non-condensing
Shock and Vibration	U.S. Military Standards 202G, 810F, SAE J1455
ESD	IEC 61000-4-2 (4KV test)

Physical/Design	
Dimensions	3.7" x 2.0" x 0.8" 94 mm x 53 mm x 20 mm
Weight	2.8 oz. (80 g) (w/ 1000 mAh Battery)
Ingress Protection Rating	IP41 in-cab use

Connectors/SIM Access	
Power, I/O	20-Pin 3mm Pitch
SIM Access	Internal (2FF SIM)

Edge Intelligence ¹	
PEG™	Update device functionality or develop new on the edge applications

Cloud/Software Services ¹	
Device Management	Manage, configure, and deploy OTA software updates to connected assets remotely at scale.
CalAmp Telematics Cloud	Device data stream via RESTful APIs

Certifications	
Industry Certifications	FCC, CE, IC, PTCRB, RoHS

CalAmp
2200 Faraday Ave Suite 220, Carlsbad, CA 92008
Tel: 888.3CALAMP • calamp.com