

TSAN053_IntegraTR_DF1RadioModem Dataradio Technical Support

For additional assistance: www.dataradio.com

Within the U.S.A.	1-800-992-7774	International	1-507-833-8819
-------------------	----------------	---------------	----------------

Product: Integra-TR™

Application: Provide interface information necessary for the configuration of the Integra-TR wireless modem to a Rockwell Allen Bradley SLC 5/0X PLC using their **Rockwell Radio Modem protocol**. Figure 1 shows the wiring information for this application.

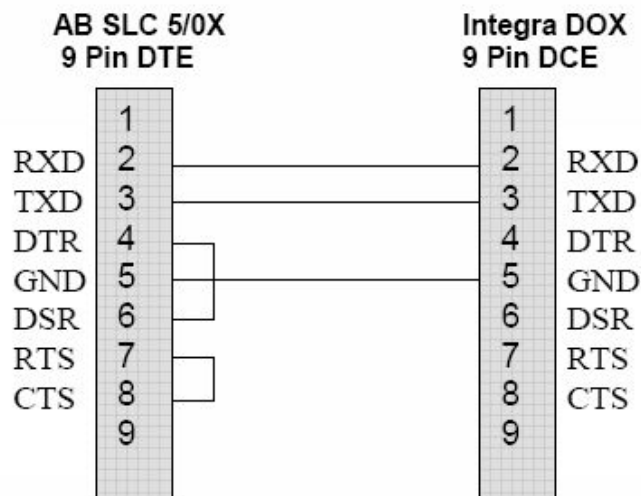


Figure 1. Wiring Interface for AB SLC 5/0X to Dataradio Integra-TR.

Set-up for AB SLC 5/0X

Note: In the DF1 Radio Modem protocol the user does not have to designate a device as a master. The DF1 Radio Modem protocol option is not available in all SLC PLCs. The following SLCs have the DF1 Radio Modem protocol available:

SLC 5/03 Ser E FRN 6 and higher
SLC 5/04 Ser C FRN 1 and higher
SLC 5/05 Ser C FRN 1 and higher

- Driver: DF1 Radio Modem
- Baud: 9600 bps
- Parity: None
- Node Address: 1 (dependent upon application)

SLC 5/0X Channel 0 Configuration

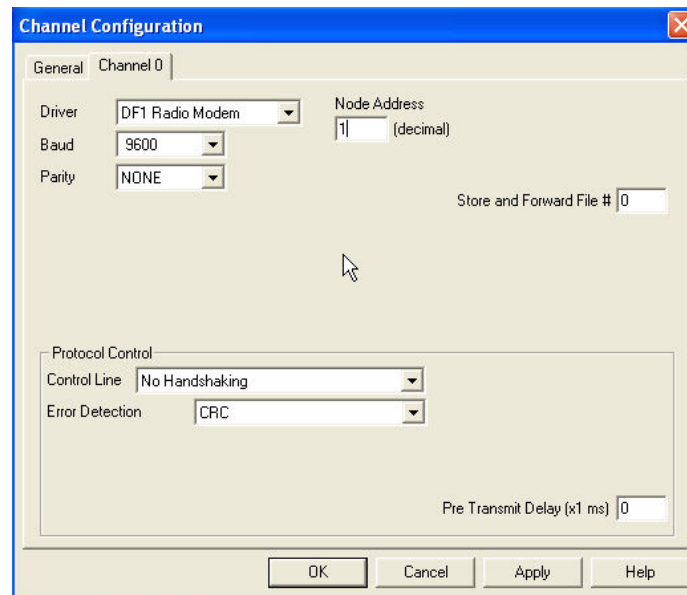


Figure 1: Allen Bradley SLC 5/0X Channel Configuration

Protocol Control

- Control Line: No Handshaking
- Error Detection: CRC (dependent upon application)

Setup for Integra-TR: Master and/or Remote for SLC 5/0X interface

Using the Integra-TR Field Programming Software, locate the parameters button. Each of the three Field Programming Software tabs should be configured as follows.

Modem Tab

- Modem Type: fixed as per attached unit
- Short ID: user assigned
- Serial No: factory assigned
- Comment: user supplied comment
- Compatibility: Integra-TR
- Data Delivery: all or selective
- Sleep Mode: disabled (usually)
- Network Speed: equal to or greater than data speed

- Station ID CWID: special use-refer to manual
- TX Online Diagnostics: checked (on)

- CWID Interval: refer to manual
- Extended Preamble: default is 5 (adjust higher for optimum performance)
- Suspend Period: power savings mode
- Activity Timeout: power saving mode

COM/Analog Tab

- TX Control: DOX
- DCD Control: switched
- DTE Baud Rate: 9600 (or as required)
- DTE Data Format: 8 bits, no parity, 1 stop (required set-up by AB DF1 protocol)
- Data Forward Timer: normal
- Break: Ignore break
- Deferred Rx-Data Delivery: 0 (typically not required for DF1 protocol)
- Analog 1: Input is default; TX controlled fan in base or fan equipped TX module
- Analog 2: Input is default

Radio Tab

- Radio: displays unit model
- Range: display unit range
- Channel: half (12.5kHz)
- Tune Range: low Rx
- Transceiver Type: transceiver (always choose this setting)
- Carrier Sense & TX Timeout: user programmable)
- Disable TX w/Carrier Present: disabled
- Radio Frequencies: displays user frequencies
- TX Power: max 255 = 5 watts (this number is non-linear; 128 is not exactly 2.5 watts)

Always refer to the Integra-TR Installation Manual (p/n 001-4008-101) set-up. Factory defaults are recommended for startup settings.