

TSAN 047_HiPR_ethereal

Dataradio Technical Support

For additional assistance: www.dataradio.com

Within the U.S.A.	1-800-992-7774	International	1-507-833-8819
-------------------	----------------	---------------	----------------

Product: HiPR-900™ or Private Wireless IP Gateway™ Ethernet connection.

Application: Network Protocol Analyzer for a HiPR-900 or Private Wireless IP Gateway Ethernet connection.

Ethereal is an example of a network protocol analyzer application program. The application can be downloaded from the web site <http://www.ethereal.com> free of charge. A demo version of another network protocol analyzer (Network Spy) can also be downloaded at <http://networkspy.net>. There are many other similar programs available. We will focus on the Ethereal protocol analyzer in this TSAN.

A network protocol analyzer program allows a user to capture and analyze a wide variety of protocols sent over an Ethernet interface. The Ethernet interface must be located where the network protocol analyzer application program is installed. Ethereal supports over 708 different protocols.

Once the application has been installed the user can choose which Ethernet interface or Ethernet adapter to choose from as shown in Figure 1. The application will automatically detect all adapters and interface devices installed.

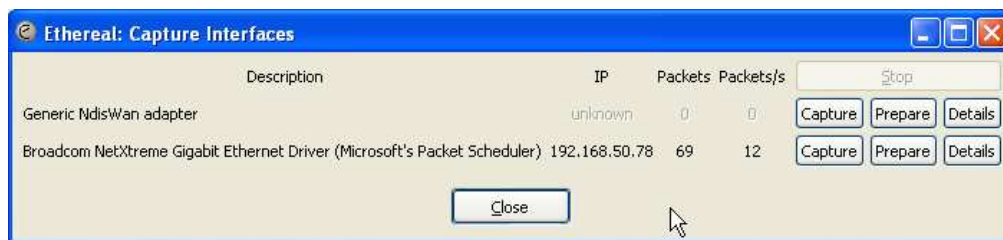


Figure 1. The user can choose which interface or adapter to capture from.

The application will start capturing the Ethernet packets when the user clicks on the “Capture” buttons next to the adapter they want to capture from. A window will pop up displaying the capture packet protocols as shown in Figure 2.

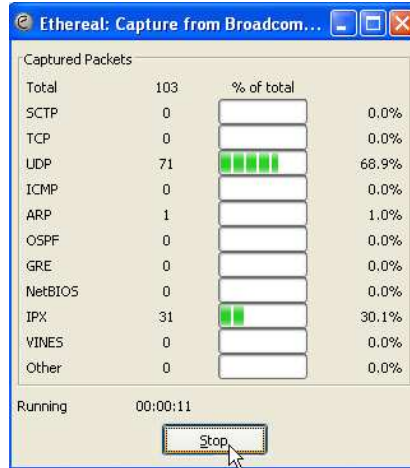


Figure 2.

The user can click on the “Stop” button to stop the capturing routine and display the packets captured as shown in Figure 3.

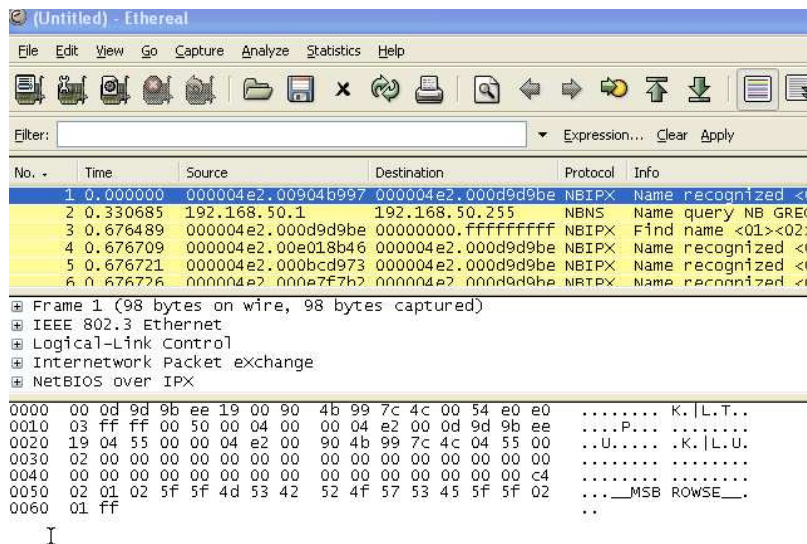


Figure 3. Display the captured packets

The captured information is useful in determining Source and Destination IP addresses, Protocol type, number of bytes in packet and the data contained in the packet. This information is helpful in trouble shooting the HiPR-900 and the Private Wireless IP Gateway networks.

If further assistance in trouble shooting your Dataradio Wireless network is required you may contact tech support at 1-800-992-7774 or at support@dataradio.com. It is recommended that Ethereal be installed on your system before contacting Tech Support.