

TSAN046_HiPR_1761ENI

Dataradio Technical Support

For additional assistance: www.dataradio.com

Within the U.S.A.	1-800-992-7774	International	1-507-833-8819
-------------------	----------------	---------------	----------------

Product: HiPR-900™

Application: The Rockwell Allen Bradley 1761-NET-ENI Ethernet IP device is used to add Ethernet capabilities to a serial port on the Micrologix™ PLC.

1761-NET-ENI Set-up: Connect the 1761-NET-ENI device to the PC and start the ENI Utility program.

Note: A 1761-CBL-PM02, Ser. C cable must be used to connect to a PC. The ENI Utility program can be downloaded from the Allen Bradley website www.ab.com, type in “Download ENI Utility” in the Search entry.

Under the **Utility Setting** tab change the Baud Rate to 19200 as shown in Figure 1. The COM port must match the COM port the device is connected to on the PC.

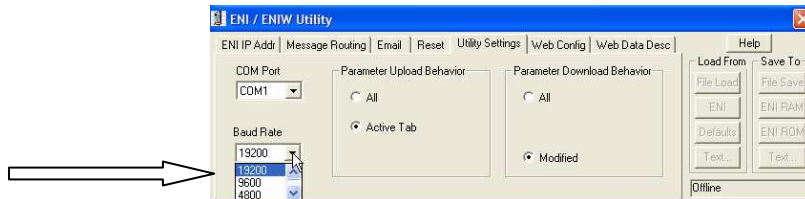


Figure 1. COM Port set to 19200

Under the **ENI IP Addr** tab choose Auto for the 232 Baud Rate setting. The **Obtain via BootP** parameter must be unchecked as shown in Figure 2.

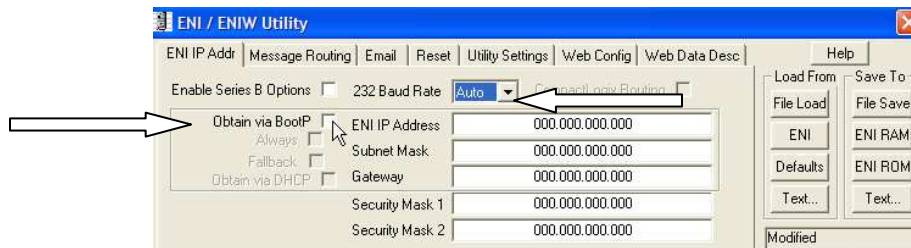


Figure 2. 232 Baud Rate: Auto, Obtain via BootP

Set the **ENI IP Address** and the **Subnet Mask** to the desired IP address and Subnet Mask as shown in Figure 3.

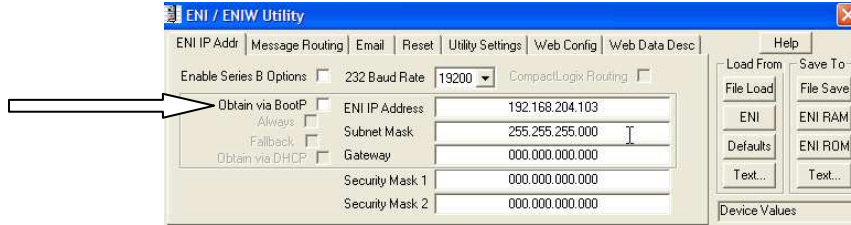


Figure 3. Set IP Address and Subnet Mask

Save to the ENI ROM by clicking on the **ENI ROM** button under the **Save To** heading as shown in Figure 4.

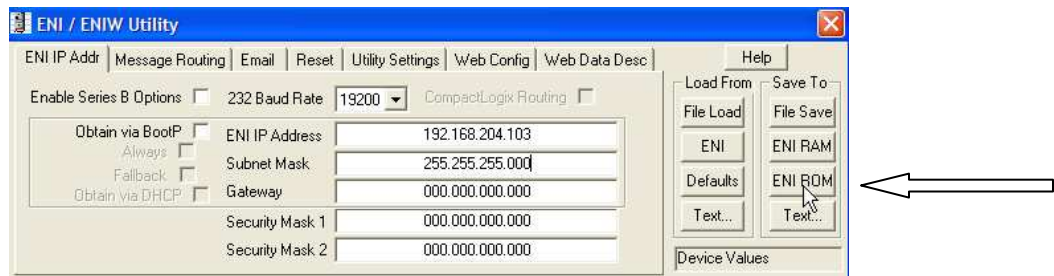


Figure 4. Save to ENI ROM

Connect the Micrologix to a PC running AB RSLogix™ software. Configure the Micrologix device's com port to 19200 DF1 full duplex as shown in Figure 5. Connect the Micrologix device to the PC using a 1761-CBL-PM02, Ser. C communication cable.

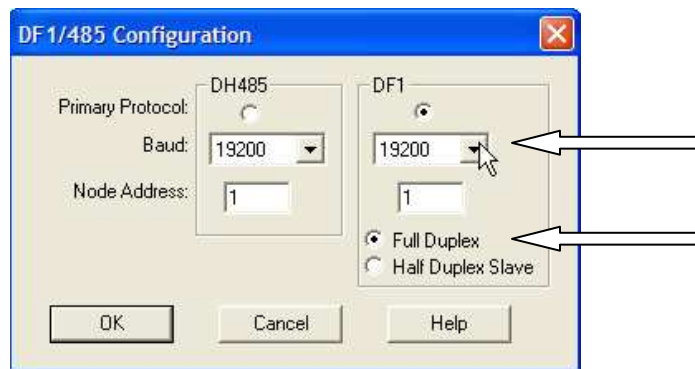


Figure 5. Com Port set to 19200, DF1, Full Duplex

Please refer to the Allen Bradley's 1761-um006_-en-p.pdf user manual.

Connect the 1761-NET-ENI to the Micrologix device using a 1761-CBL-AM00 SER C communication cable. Connect the HiPR-900 to the 1761-NET-ENI with a Cat 5 Ethernet cable.

HiPR-900 Setup: Set the HiPR-900's for Bridge mode or Router mode operation. Follow the recommended procedure in the Quick Reference that came with the unit or the User manual for the HiPR-900 page 27, **section 4. Operation and Configuration.** <http://www.dataradio.com/downloads.html>

Note: The RSLogix program via RSLinx™ software requires that the 1761-NET-ENI device's IP address must be on the same subnet as the PC running the RSLogix program in order for the devices to communicate.

For example:

PC w/RSLogix IP Address: **192.168.100.5**, Subnet Mask 255.255.255.0

1761-NET-ENI IP Address: **192.168.100.3**, Subnet Mask 255.255.255.0