

TSAN 019 INTEGRA TR AB MICRO LOGIX

Dataradio Technical Support

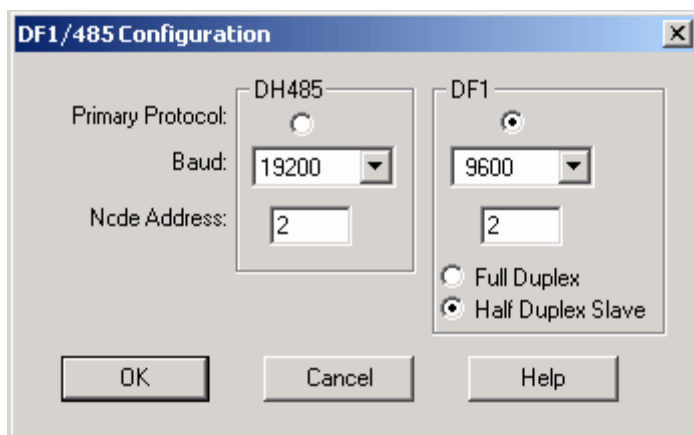
For additional assistance: www.dataradio.com

Within the U.S.A.	1-800-992-7774	International	1-507-833-8819
-------------------	----------------	---------------	----------------

Product: Integra-TR™

Application: Interface for MicroLogix to Integra-TR™™ wireless modem

Set-up: MicroLogix Configuration Information



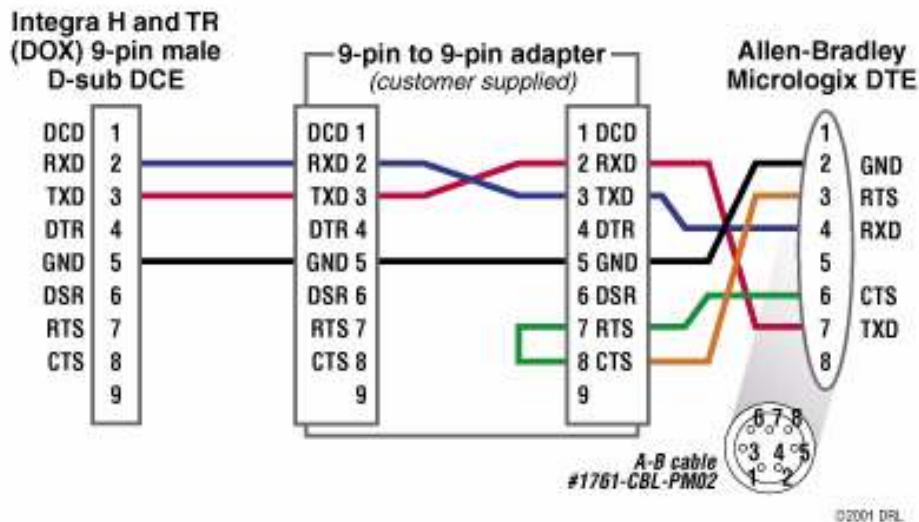
Interface for MicroLogix to Integra-TR Wireless Modem

MicroLogix Configuration

Primary Protocol: DF1
Baud: 9600
Node Address: 2
Half Duplex Slave

Figure 1 MicroLogix Channel Configuration

Note: All timings are application dependent. Figure 1 shows a properly operating system.



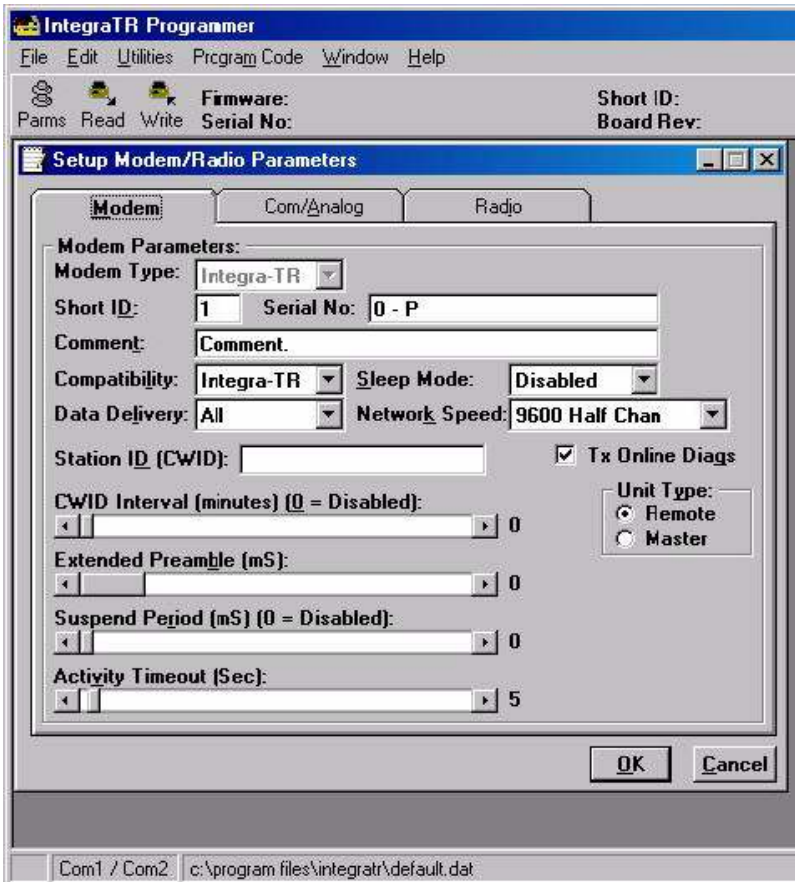


Figure 3 Setup Modem Parameters

Unit Type: Designates Master or Remote location

Extended Preamble: If transmitting through a Repeater, begin with a setting of "10". This acts as "Pre-key" delay and allows a repeater to lock in to an active carrier so the data has unimpeded throughput.

Suspend Period & Activity Timeout: Used in power saving modes - generally not used.

Integra Configuration

Parameters are set using the Integra Field Programming Software's Edit/Setup Modem/Com/Analog/Radio Parameters Screens. Refer to Figures 2, 3, 4 & 5 for Individual configurations

Short ID: User programmable

Serial No: Unit identification

Comment: Add comments as needed

Compatibility: Integra-TR

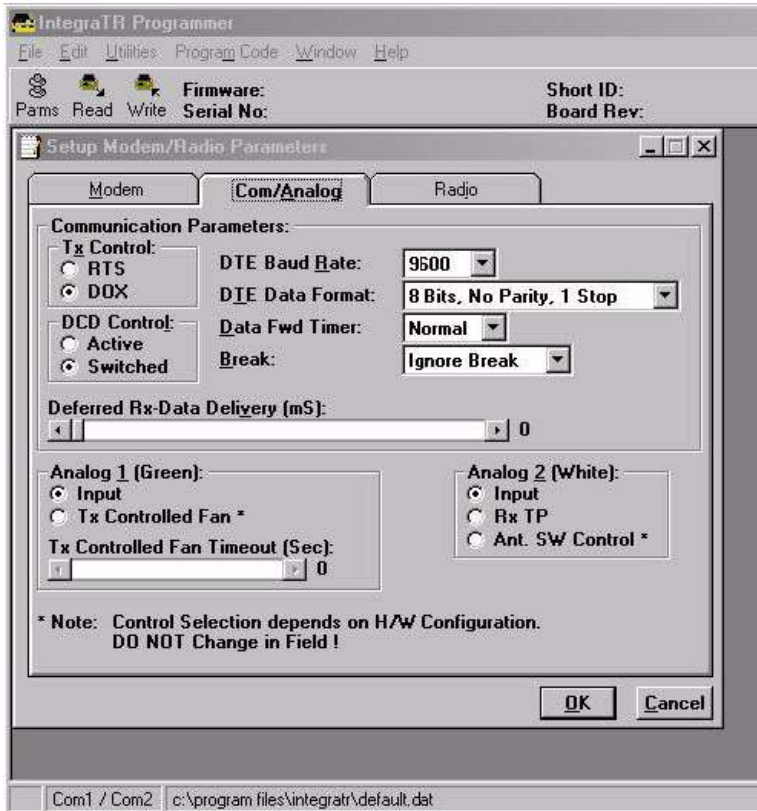
Sleep Mode: Disabled

Data Delivery: All

Network Speed: 9600 Half Channel

Station ID: Used to set Station ID - combination of uppercase letters and numbers

TX Online Diags: Enabled for diagnostics



Communication Parameters:

TX Control: DOX
DTE Baud Rate: 9600
DTE Data Format: 8 Bits, No Parity, 1 Stop
DCD Control: Switched
 No Parity, 1 Stop - setting for DF-1 Half duplex
Data Fwd Timer: Normal
Break: Ignore Break
Deferred Rx-Data Delivery:
 (The MicroLogix PLC typically does not require deferred data delivery) 0
Analog 1 (Green): Input
Analog 2 (White): Input
TX Controlled Fan Timeout (Sec): 0 (unless used at base or for extended duty)

Figure 4 Setup COM/Analog Parameters

Radio Parameters:

Radio: Displays unit model
Range: Displays unit range
Channel: Half (12.5 kHz)
Tune Range: Low Rx
Transceiver Type: Transceiver - always choose this setting
Carrier Sense & TX Timeout: User programmable - *always* begin with factory default.
Disable TX w/ Carrier Present: Disabled
Radio Frequencies: Displays user frequencies
TX Power: 255 is max 255= 5 watts (not linear, i.e., 128 is not exactly 2.5 W)
Figure 5 Setup Radio Parameters
 Note:
Refer to the Integra-TR Installation Manual (001-4008-101) for proper set -up.

